



**REGIONAL SPECIALISED METEOROLOGICAL CENTRE-TROPICAL CYCLONES, NEW DELHI
TROPICAL CYCLONE ADVISORY**

DEMS-RSMC SPECIAL TROPICAL CYCLONES NEW DELHI DATED 17.06.2023

FROM: RSMC –TROPICAL CYCLONES, NEW DELHI

**TO: STORM WARNING CENTRE, NAYPYI TAW (MYANMAR)
STORM WARNING CENTRE, BANGKOK (THAILAND)
STORM WARNING CENTRE, COLOMBO (SRILANKA)
STORM WARNING CENTRE, DHAKA (BANGLADESH)
STORM WARNING CENTRE, KARACHI (PAKISTAN)
METEOROLOGICAL OFFICE, MALE (MALDIVES)
OMAN METEOROLOGICAL DEPARTMENT, MUSCAT (THROUGH RTH JEDDAH)
YEMEN METEOROLOGICAL SERVICES, REPUBLIC OF YEMEN (THROUGH RTH JEDDAH)
NATIONAL CENTRE FOR METEOROLOGY, UAE (THROUGH RTH JEDDAH)
PRESIDENCY OF METEOROLOGY AND ENVIRONMENT, SAUDI ARABIA (THROUGH RTH JEDDAH)
IRAN METEOROLOGICAL ORGANISATION, (THROUGH RTH JEDDAH)
QATAR METEOROLOGICAL DEPARTMENT (THROUGH RTH JEDDAH)**

TROPICAL CYCLONE ADVISORY NO. 86 FOR NORTH INDIAN OCEAN (THE BAY OF BENGAL AND ARABIAN SEA) VALID FOR NEXT 24 HOURS ISSUED AT 0900 UTC OF 17.06.2023 BASED ON 0600 UTC OF 17.06.2023

SUB: DEEP DEPRESSION (REMNANT OF CYCLONIC STORM ‘BIPARJOY’) OVER SOUTHWEST RAJASTHAN AND ADJOINING GUJARAT

THE DEEP DEPRESSION (REMNANT OF CYCLONIC STORM ‘BIPARJOY’) OVER SOUTHWEST RAJASTHAN ADJOINING GUJARAT AND SOUTHEAST PAKISTAN MOVED NORTHEASTWARDS WITH A SPEED OF 17 KMPH DURING PAST 6-HOURS AND LAY CENTERED AT 0600 UTC OF TODAY, THE 17TH JUNE, 2023 OVER SOUTHWEST RAJASTHAN AND ADJOINING GUJARAT NEAR LATITUDE 25.3°N AND LONGITUDE 71.9°E, ABOUT 70 KM SOUTHEAST OF BARMER (42435) AND 160 KM SOUTHWEST OF JODHPUR (42339).

IT IS VERY LIKELY TO MOVE EAST-NORTHEASTWARDS AND WEAKEN INTO A DEPRESSION AROUND 1200 UTC. THEREAFTER, IT IS VERY LIKELY TO CONTINUE TO MOVE EAST-NORTHEASTWARDS AND MAINTAIN THE INTENSITY OF DEPRESSION TILL AROUND 0300 UTC OF 18TH JUNE.

FORECAST TRACK AND INTENSITY ARE GIVEN BELOW:

DATE/TIME(UTC)	POSITION (LAT. °N/ LONG. °E)	MAXIMUM SUSTAINED SURFACE WIND SPEED (KMPH)	CATEGORY OF CYCLONIC DISTURBANCE
17.06.23/0600	25.3/71.9	50-60 Gusting To 70	Deep Depression
17.06.23/1200	25.6/72.4	45-55 Gusting To 65	Depression
17.06.23/1800	25.9/73.0	40-50 Gusting To 60	Depression
18.06.23/0000	26.2/73.8	35-45 Gusting To 55	Depression

Cloud distribution: (a) Isolated: <25%, Scattered:25-50%, Broken: 51-75%, Solid:>75%, Convection Intensity: (a) Weak: Cloud Top Temperature (CTT) >-25°C, (b) Moderate: CTT: - 25°C to -40°C, (c) Intense: CTT: - 41°C to -70°C and (d) Very Intense: : Less than -70°C
PROBABILITY OF CYCLOGENESIS (FORMATION OF DEPRESSION):NIL: 0%, LOW: 1-33%, , MODERATE: 34-66% AND HIGH: 67-100%
This is a guidance Bulletin for WMO/ESCAP Panel Member countries. Visit respective National websites for Country specific Bulletins

AS PER INSAT 3D IMAGERY, ASSOCIATED SCATTERED TO BROKEN LOW/MEDIUM CLOUDS WITH EMBEDDED INTENSE TO VERY INTENSE CONVECTION LAY OVER SOUTHWEST RAJASTHAN, SOUTHEAST PAKISTAN AND KUTCH AREA. MINIMUM CLOUD TOP TEMPERATURE IS MINUS 75°C. SCATTERED TO BROKEN LOW/MEDIUM CLOUDS WITH EMBEDDED WEAK TO MODERATE CONVECTION LAY OVER NORTHEAST ARABIAN SEA, REST PARTS RAJASTHAN, SAURASHTRA, GUJARAT REGION AND GULF OF KUTCH.

ASSOCIATED MAXIMUM SUSTAINED WIND SPEED (MSW) IS 30 KNOTS GUSTING TO 40 KNOTS. THE ESTIMATED CENTRAL PRESSURE IS 990 HPA.

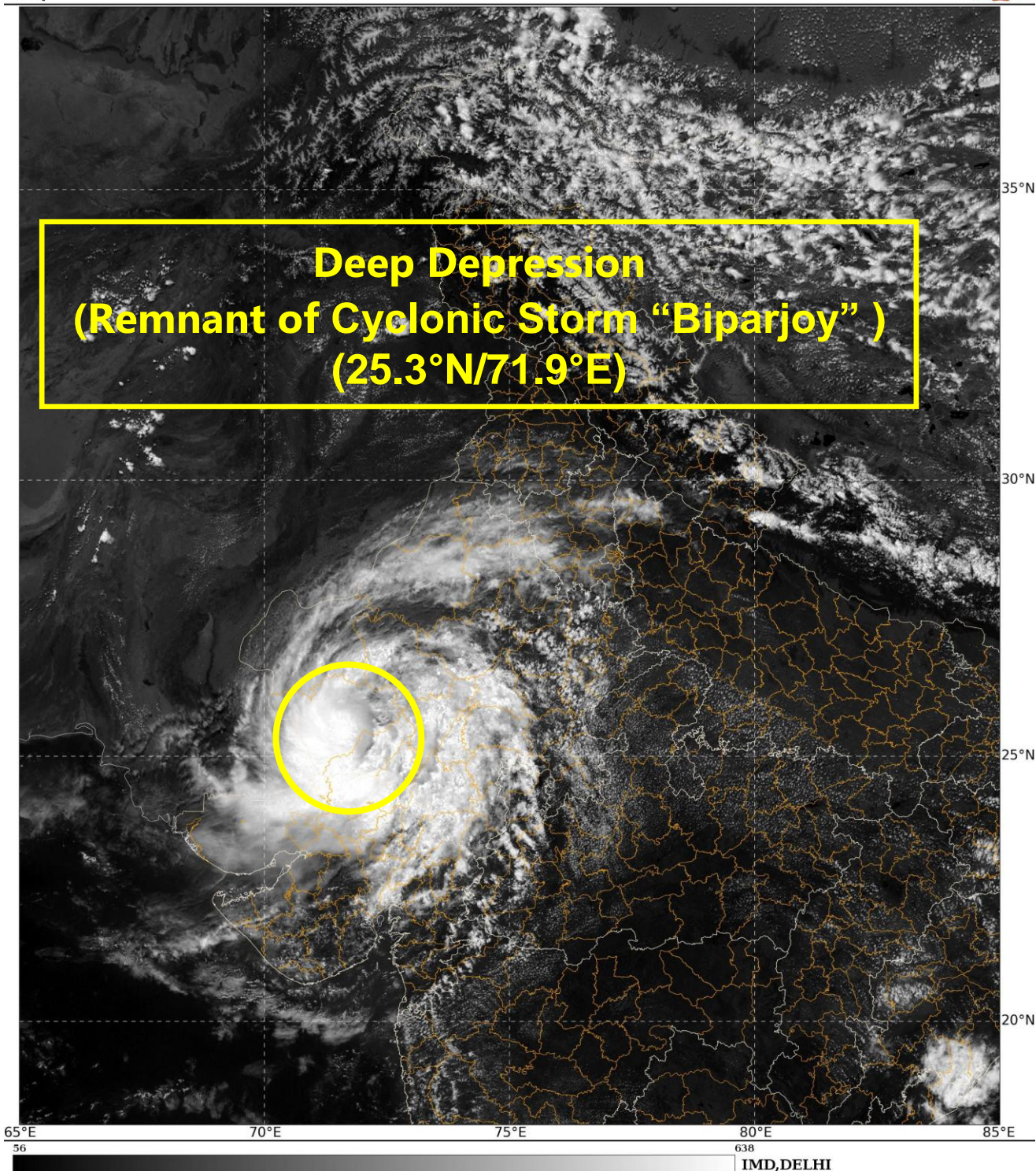
AT 0600 UTC, BARMER (42435) REPORTED MEAN SEA LEVEL PRESSURE (MSLP) OF 993.6 HPA, 24 HOUR PRESSURE FALL (P24) OF -7.0 HPA AND MAXIMUM SUSTAINED WIND SPEED (MSW) OF 320°/09KT. DEESA (42539) REPORTED MSLP OF 997.3 HPA, P24 OF -1.4 HPA AND MSW OF 180°/18KT. JHODPUR (42339) REPORTED MSLP OF 997.3 HPA, P24 OF -3.5 HPA AND MSW OF 140°/02KT.

REMARKS:

THE LOW LEVEL VORTICITY IS AROUND $200-250 \times 10^{-6} \text{S}^{-1}$ & IS LOCATED TO THE SOUTHWEST OF THE SYSTEM CENTRE. LOW LEVEL CONVERGENCE IS ABOUT $20 \times 10^{-5} \text{S}^{-1}$ TO THE SOUTHWEST OF THE SYSTEM CENTRE AND UPPER LEVEL DIVERGENCE IS ABOUT $20 \times 10^{-5} \text{S}^{-1}$ TO THE SOUTHWEST OF SYSTEM CENTRE. VERTICAL WIND SHEAR IS MODERATE TO HIGH (20-25 KNOTS) OVER THE SYSTEM AREA. THE SYSTEM IS STILL IN A MODERATELY FAVOURABLE ENVIRONMENT, THUS IT IS WEAKENING GRADUALLY.

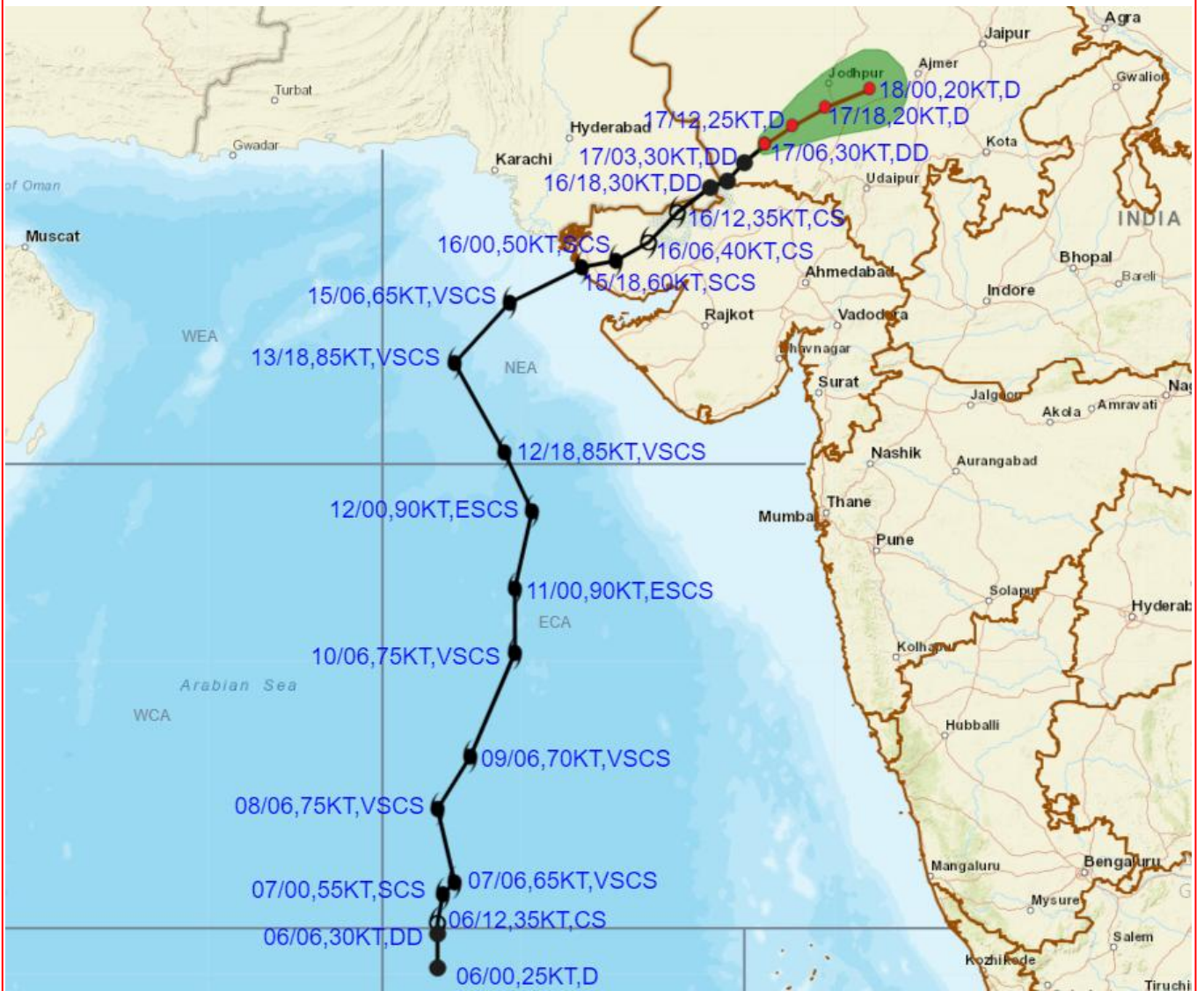
BASED ON ENVIRONMENTAL CONDITIONS AND NWP MULTI-MODEL FORECASTS THE SYSTEM IS VERY LIKELY TO MOVE NEARLY EAST-NORTHEASTWARDS AND WEAKEN INTO A DEPRESSION AROUND 1200 UTC. THEREAFTER, IT IS VERY LIKELY TO CONTINUE TO MOVE EAST-NORTHEASTWARDS AND MAINTAIN THE INTENSITY OF DEPRESSION TILL AROUND 0300 UTC OF 18TH JUNE.

**M. SHARMA
SCIENTIST D
RSMC NEW DELHI**





OBSERVED AND FORECAST TRACK ALONGWITH CONE OF UNCERTAINTY OF DEEP DEPRESSION (REMANANT OF CYCLONIC STORM BIPARJOY) OVER SOUTHWEST RAJASTHAN AND ADJOINING GUJARAT BASED ON 0600 UTC (1130 IST) OF 17TH JUNE 2023.

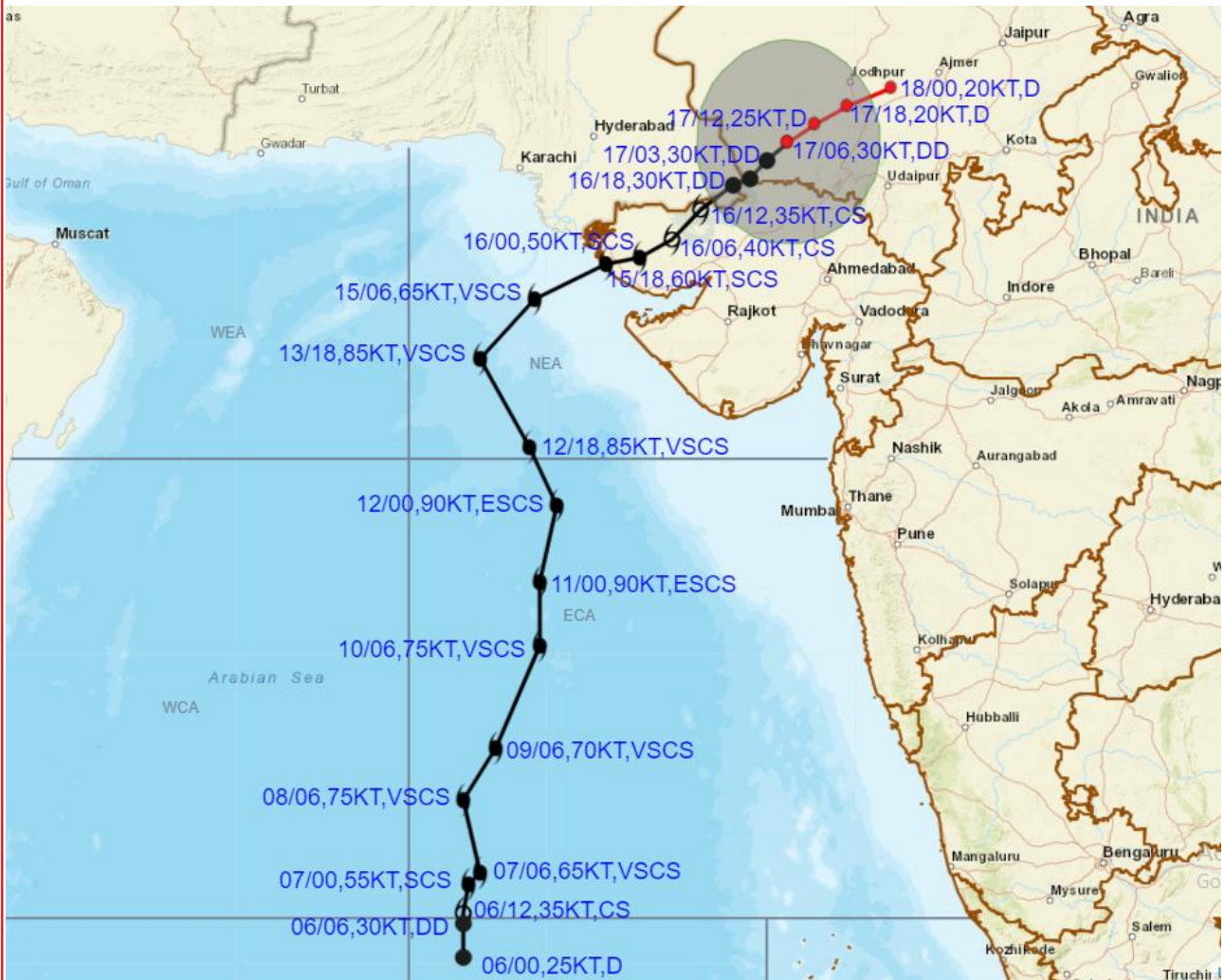


DATE/TIME IN UTC
 IST=UTC + 0530
 L: LOW PRESSURE AREA
 WML: WELL MARKED LOW PRESSURE AREA
 D: DEPRESSION (17-27 KT)
 DD: DEEP DEPRESSION (28-33 KT)
 CS: CYCLONIC STORM (34-47 KT)
 SCS: SEVERE CYCLONIC STORM (48-63KT)
 VSCS: VERY SEVERE CYCLONIC STORM (64-89 KT)
 ESCS: EXTREMELY SEVERE CYCLONIC STORM (90-119 KT)
 SuCS: SUPER CYCLONIC STORM (≥ 120 KT)

- LESS THAN 34 KT
- 34-47 KT
- ≥ 48 KT
- OBSERVED TRACK
- FORECAST TRACK
- CONE OF UNCERTAINTY



OBSERVED AND FORECAST TRACK ALONGWITH QUADRANT WIND DISTRIBUTION OF DEEP DEPRESSION (REMANANT OF CYCLONIC STORM BIPARJOY) OVER SOUTHWEST RAJASTHAN AND ADJOINING GUJARAT BASED ON 0600 UTC (1130 IST) OF 17TH JUNE 2023.



DATE/TIME IN UTC
 IST=UTC + 0530
 L: LOW PRESSURE AREA
 WML: WELL MARKED LOW PRESSURE AREA
 D: DEPRESSION (17-27 KT)
 DD: DEEP DEPRESSION (28-33 KT)
 CS: CYCLONIC STORM (34-47 KT)
 SCS: SEVERE CYCLONIC STORM (48-63KT)
 VSCS: VERY SEVERE CYCLONIC STORM (64-89 KT)
 ESCS: EXTREMELY SEVERE CYCLONIC STORM (90-119 KT)
 SuCS: SUPER CYCLONIC STORM (\geq 120 KT)

● LESS THAN 34 KT
 ○ 34-47 KT
 ○ \geq 48 KT
 — OBSERVED TRACK
 — FORECAST TRACK
 ● CONE OF UNCERTAINTY
 AREA OF MAXIMUM SUSTAINED WIND SPEED:
 ■ 28-33 KT (52-61 KMPH)
 ■ 34-49 KT (62-91 KMPH)
 ■ 50-63 KT (92-117 KMPH)
 ■ \geq 64 KT (\geq 118 KMPH)

IMPACT OVER THE SEA

MSW (knot/kmph)	Impact	Action
28-33 (52-61)	Very rough seas	Total suspension of fishing operations
34-49 (62-91)	High to very high seas	Total suspension of fishing operations
50-63 (92-117)	Very high seas	Total suspension of fishing operations
\geq 64 (\geq 118)	Phenomenal	Total suspension of fishing operations

Cloud distribution: (a) Isolated: <25%, Scattered:25-50%, Broken: 51-75%, Solid:>75%, Convection Intensity: (a) Weak: Cloud Top Temperature (CTT) >-25°C, (b) Moderate: CTT: - 25°C to -40°C, (c) Intense: CTT: - 41°C to -70°C and (d) Very Intense: : Less than -70°C
 PROBABILITY OF CYCLOGENESIS (FORMATION OF DEPRESSION):NIL: 0%, LOW: 1-33%, , MODERATE: 34-66% AND HIGH: 67-100%
 This is a guidance Bulletin for WMO/ESCAP Panel Member countries. Visit respective National websites for Country specific Bulletins